



FOR IMMEDIATE RELEASE

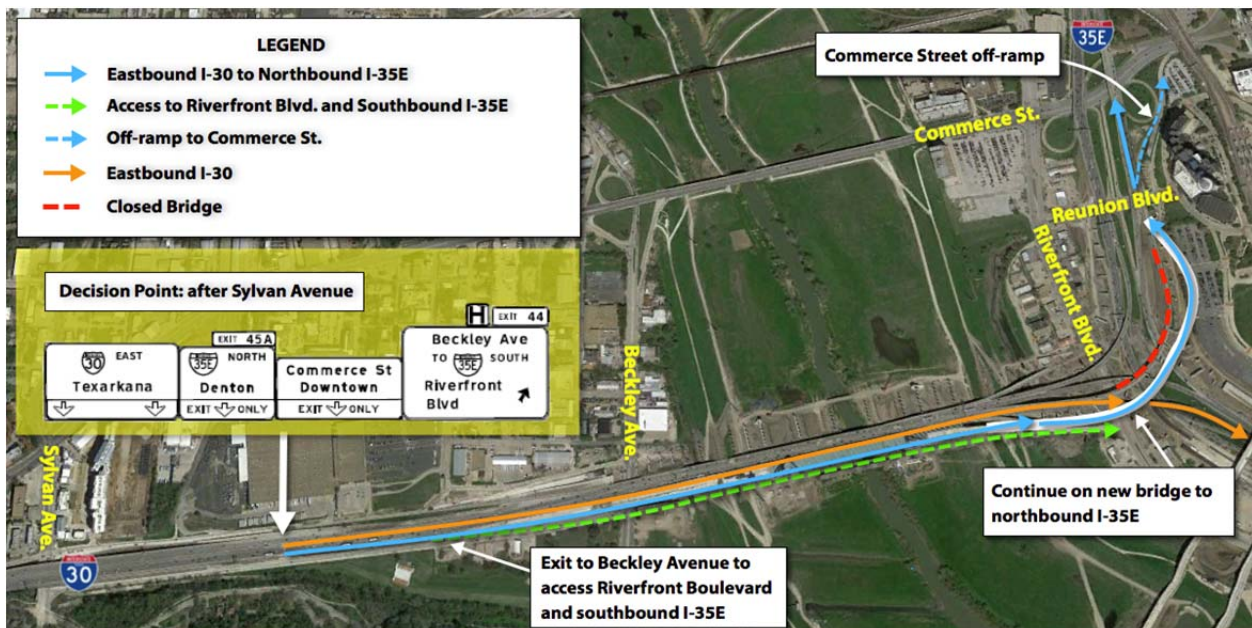
Aug. 28, 2015

TRAFFIC ALERT: Major Traffic Shifts on Eastbound I-30 including New Bridge to Northbound I-35E on Saturday, Sept. 5

DALLAS – Construction of the Dallas Horseshoe Project is progressing and drivers will see a new traffic configuration on eastbound I-30 between Sylvan Avenue and downtown Dallas starting overnight on Saturday, Sept. 5. Drivers will now have to make an earlier decision and stay in the two right lanes to exit to northbound I-35E, Commerce Street, Riverfront Boulevard and southbound I-35E.

Drivers wanting to continue on eastbound I-30 through downtown Dallas must be in the two left lanes (orange line on map). *This is a new lane configuration, as previous access to continue to I-30 was in the two right lines.*

Drivers should pay close attention to the overhead roadway signs to make sure they are in the correct lanes. The map below shows the new directions for travel.



more -

The public can stay updated about traffic closures and the Dallas Horseshoe Project through:

- **Text Alert System:** Sign up by texting “dallashorseshoe” to 31996
- **Website:** www.dallashorseshoe.com
- **Facebook:** www.facebook.com/dallashorseshoe
- **Twitter:** www.twitter.com/dallashorseshoe
- **Phone Hotline:** 214-Fix-MixD (349-6493)

Media Contact:

Katrina Keyes, Public Relations/Media Director
Dallas Horseshoe Project
Email: kkeyes@kstrategies.com
Cell: 214-403-2583

###

About the Dallas Horseshoe Project

The Dallas Horseshoe Project is a \$798 million design-build roadway construction project by the Texas Department of Transportation (TxDOT) to improve traffic flow through the heart of downtown Dallas. Aptly dubbed the “Horseshoe project” due to its U shape, the project is dedicated to “Fixin’ the Mix”. Construction improvements include the expansion, repaving and addition of several new bridges and roadways along interstates 30 and 35E; and the construction of a new signature bridge, the Margaret McDermott Bridge, over I-30.

The project started in April 2013 and is scheduled to be complete as early as 2017. Once completed, drivers should experience improved safety, increased capacity and improved mobility through the downtown Dallas Mixmaster and the central business district.